

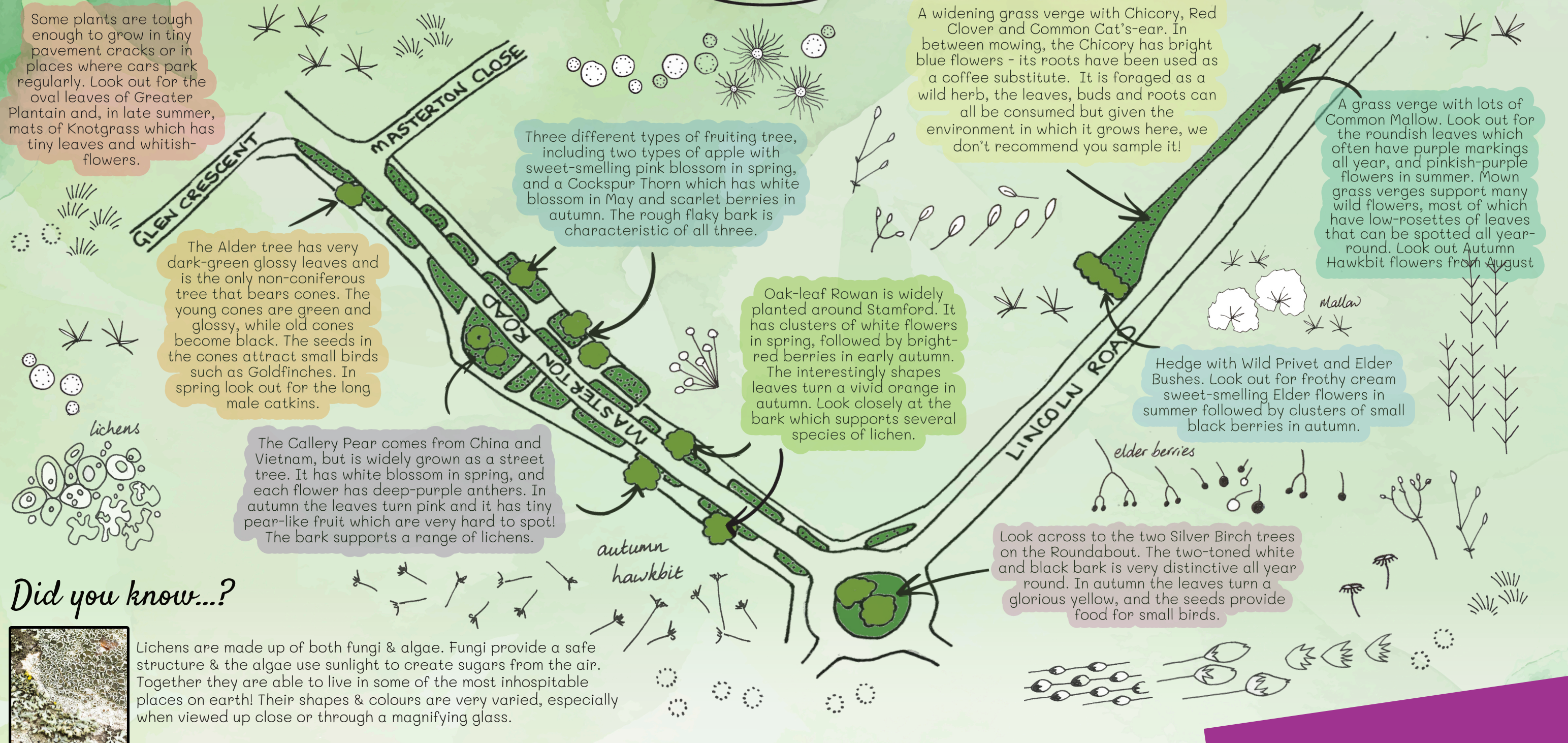
Take a wander through your neighbourhood & notice some of the amazing nature hiding in plain sight, some treasures to look for are pointed out here, then have a go at some of our nature doodle prompts

DIY WALKSHOP*

A creative nature treasure hunt through the seasons
by botanist Sarah Lambert & artist Kathryn Parsons

Art Pop-Up

Supported using public funding by
ARTS COUNCIL ENGLAND
LOTTERY FUNDED



Some plants are tough enough to grow in tiny pavement cracks or in places where cars park regularly. Look out for the oval leaves of Greater Plantain and, in late summer, mats of Knotgrass which has tiny leaves and whitish-flowers.

The Alder tree has very dark-green glossy leaves and is the only non-coniferous tree that bears cones. The young cones are green and glossy, while old cones become black. The seeds in the cones attract small birds such as Goldfinches. In spring look out for the long male catkins.

The Gallery Pear comes from China and Vietnam, but is widely grown as a street tree. It has white blossom in spring, and each flower has deep-purple anthers. In autumn the leaves turn pink and it has tiny pear-like fruit which are very hard to spot! The bark supports a range of lichens.

Three different types of fruiting tree, including two types of apple with sweet-smelling pink blossom in spring, and a Cockspur Thorn which has white blossom in May and scarlet berries in autumn. The rough flaky bark is characteristic of all three.

Oak-leaf Rowan is widely planted around Stamford. It has clusters of white flowers in spring, followed by bright-red berries in early autumn. The interestingly shapes leaves turn a vivid orange in autumn. Look closely at the bark which supports several species of lichen.

A widening grass verge with Chicory, Red Clover and Common Cat's-ear. In between mowing, the Chicory has bright blue flowers - its roots have been used as a coffee substitute. It is foraged as a wild herb, the leaves, buds and roots can all be consumed but given the environment in which it grows here, we don't recommend you sample it!

A grass verge with lots of Common Mallow. Look out for the roundish leaves which often have purple markings all year, and pinkish-purple flowers in summer. Mown grass verges support many wild flowers, most of which have low-rosettes of leaves that can be spotted all year-round. Look out Autumn Hawkbit flowers from August

Hedge with Wild Privet and Elder Bushes. Look out for frothy cream sweet-smelling Elder flowers in summer followed by clusters of small black berries in autumn.

Look across to the two Silver Birch trees on the Roundabout. The two-toned white and black bark is very distinctive all year round. In autumn the leaves turn a glorious yellow, and the seeds provide food for small birds.

Did you know...?

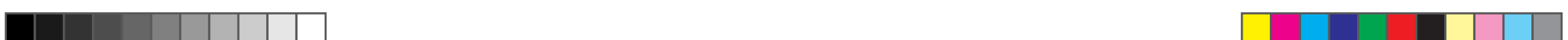


Lichens are made up of both fungi & algae. Fungi provide a safe structure & the algae use sunlight to create sugars from the air. Together they are able to live in some of the most inhospitable places on earth! Their shapes & colours are very varied, especially when viewed up close or through a magnifying glass.



"Masterton verges"

Nature treasures to be found across the year in green spaces around Masterton Road



Let's get creative! You don't have to be 'arty' to have some fun - try our simple nature activity prompts

DIY WALKSHOP*

A creative nature treasure hunt through the seasons

by botanist Sarah Lambert & artist Kathryn Parsons

Nature has so many patterns and tiny details

Take a close look and then have a go at some of the following ideas:

Treasure Hunt

Search at different times of the year and you'll find different things, so do this more than once and see what you can find!

- Collect fallen twigs, leaves, feathers & other treasures! How many different coloured leaves can you find? How many different shaped leaves can you find (eg pointy ones, heart-shaped, lobed, round & etc)
- Make a pattern with your finds - either at home, or on a safe place away from the road & pavement
- Take your leaves home to make leaf prints (paint on a leaf & print with it), or collages of imaginary leaf creatures
- String your treasures together to make a garland

Hunt For Wildflowers

Notice the wildflowers that are thriving in the pavement cracks. Even in January you might find these survivors flowering! How many different flowers can you find? Enjoy nature-doodling their different shapes!

Mini-worlds

Look closely for tiny details...

- Find the tiny lichen on tree-bark, walls, fence posts and pavements
- Find the tiniest flower, or leaf you can
- Notice the small patterns of the tree bark... and see how different each tree is!

Nature-doodle some of your mini-world finds, or photograph them

Wander with a camera

Go for a walk and photograph the plants that catch your eye.

If you've got a magnifier or zoom on your camera, try zooming in to see details that are hard to see... you could nature-doodle the patterns you find.

Befriend a tree

By visiting often, notice how a tree changes through the seasons

- Touch the bark, how does it feel? knobbly, smooth, bobbly, rough, flaky?
- Make bark and leaf rubbings using wax crayons
- Collect fallen leaves or seeds, and press them in a book to make a lasting memento of your tree-friend. After a few weeks, when the leaves / seeds are dry you can make a collage by sticking them on paper

Nature's Songs

On a breezy day stand under a tree and listen to the sound of the wind in the leaves.

Different trees sound different! What sounds or words does it make you think of? Listen for birds singing in the hedge & the trees too

Blossom Time

In spring stand at the apple and pear trees and smell the blossom - listen for the insects' happy hum!



WALKshops

In autumn 2022, Art Pop-Up commissioned botanist Sarah Lambert and artist Kathryn Parsons to host guided nature walks incorporating an art workshop: WALKshops. Engaging with nature and creativity has huge benefits for wellbeing.

These DIY guides to the walks are the project legacy, introducing local communities to the amazing nature on their doorsteps in 3 urban locations in Stamford: Casterton Road, Masterton Road and the Community Orchard at Christ Church Close. The free guides are available on our website.

Find us at www.artpopup.co.uk
@ArtPopUpUK

©Art Pop-Up 2022. All rights reserved.

Art Pop-Up



Hunting for treasures is great fun, but ensure you keep safe:

- Don't eat anything you find
- Wash your hands well with soap after you've handled any natural objects
- Watch out for dog poo & avoid it!
- Always watch out for traffic and cyclists on the pavement

What is nature doodling?

Doodling is simple mark making

- Start by noticing the shapes and patterns that catch your eye. Look at leaf shapes, flowers & seeds, bark patterns, lichen etc
- Using whatever you have to hand (pencils, crayons, pens etc.), doodle the basic outlines of these treasures - keep them really simple. You could even use coffee and a stick to doodle.

Try folding a piece of paper in to 4 or more squares, then unfold it and fill each square with a pattern of doodles inspired by your finds. You could put one pattern in one square, repeating it lots of times, or fill each square with different doodles.

About Art Pop-Up

We're a multi-award winning, non-profit community arts organisation based in Stamford. As cultural engineers & community builders, we create inspiring, thought-provoking opportunities for our community to get creative, from workshops to festivals and community events.

To find out what programmes we're running currently, check our Facebook page @ArtPopUpUK or website ArtPopUp.co.uk

Photos & map by S Lambert, doodles & activities by K Parsons, design by S Roddan.



Supported using public funding by
ARTS COUNCIL ENGLAND