

Take a wander through your neighbourhood & notice some of the amazing nature hiding in plain sight, some treasures to look for are pointed out here, then have a go at some of our nature doodle prompts

# \*DIY\* WALKSHOP\*

A creative nature treasure hunt through the seasons  
by botanist Sarah Lambert & artist Kathryn Parsons

## Art Pop-Up

Supported using public funding by  
**ARTS COUNCIL ENGLAND**  
LOTTERY FUNDED



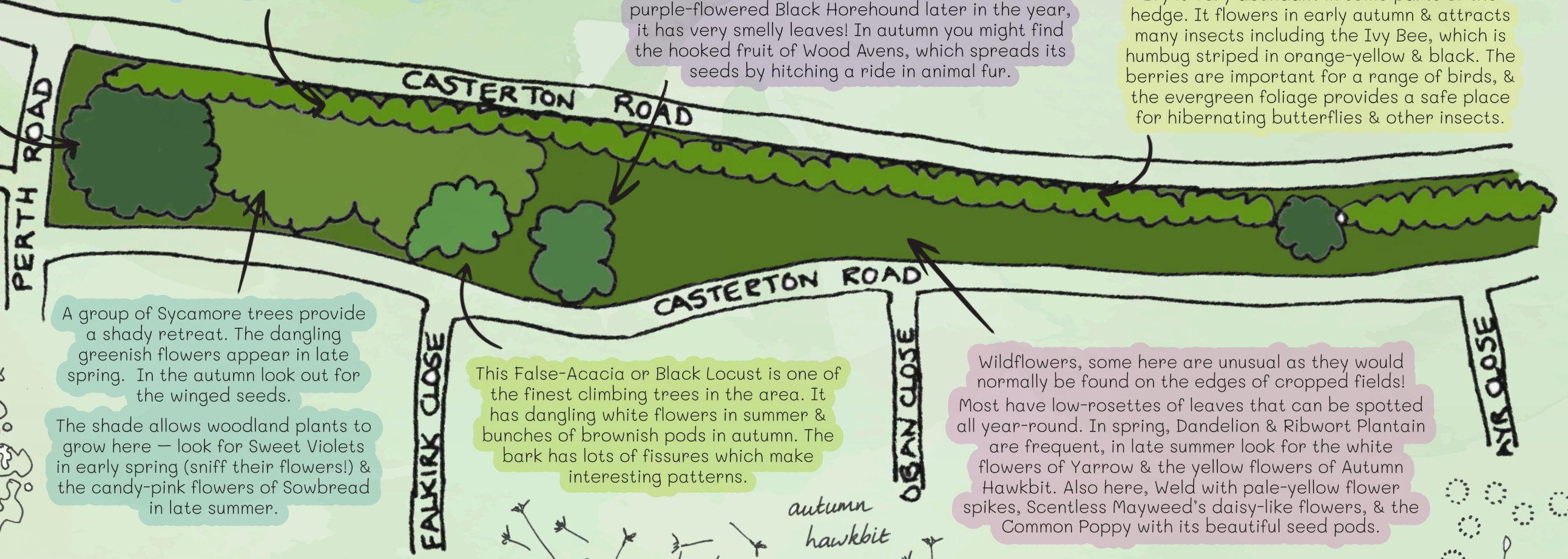
The hedge along Casterton Road is likely ancient with Hawthorn, Elder, Blackthorn & Sycamore providing a succession of blossom & berries throughout the year. This hedge provides a home for small birds such as House Sparrows, Goldfinches & Long-tailed Tits.

The hedgerow & an isolated patch of scrub have their own special plants. Look out for the frothy white flowers of Cow Parsley in May, & find the purple-flowered Black Horehound later in the year, it has very smelly leaves! In autumn you might find the hooked fruit of Wood Avens, which spreads its seeds by hitching a ride in animal fur.



Ivy is very abundant in some parts of the hedge. It flowers in early autumn & attracts many insects including the Ivy Bee, which is humbug striped in orange-yellow & black. The berries are important for a range of birds, & the evergreen foliage provides a safe place for hibernating butterflies & other insects.

Caucasian Lime are fine trees with shiny heart shaped leaves. The perfumed flowers appear in July & are very attractive to insects, particularly Honey Bees. In late summer there are bobble-shaped seeds. The bark has well-defined lozenge shaped marks that help oxygen pass through the tough bark of the tree.

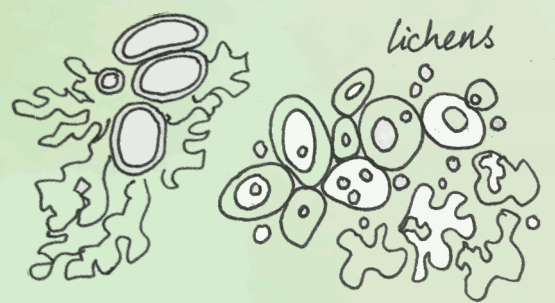


A group of Sycamore trees provide a shady retreat. The dangling greenish flowers appear in late spring. In the autumn look out for the winged seeds.

The shade allows woodland plants to grow here — look for Sweet Violets in early spring (sniff their flowers!) & the candy-pink flowers of Sowbread in late summer.

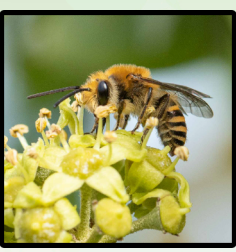
This False-Acacia or Black Locust is one of the finest climbing trees in the area. It has dangling white flowers in summer & bunches of brownish pods in autumn. The bark has lots of fissures which make interesting patterns.

Wildflowers, some here are unusual as they would normally be found on the edges of cropped fields! Most have low-rosettes of leaves that can be spotted all year-round. In spring, Dandelion & Ribwort Plantain are frequent, in late summer look for the white flowers of Yarrow & the yellow flowers of Autumn Hawkbit. Also here, Weld with pale-yellow flower spikes, Scentsless Mayweed's daisy-like flowers, & the Common Poppy with its beautiful seed pods.



### Did you know...?

The bark of Sycamore is particularly good for lichens, forming a lush greenish- yellow coating on the trunks. Lichens are made up of both fungi & algae. Fungi provide a safe structure & the algae use sunlight to create sugars from the air. Together they are able to live in some of the most inhospitable places on earth! Their shapes & colours are very varied, especially when viewed through a magnifying glass.



The Ivy Bee was a new species in 1993 & first recorded in the UK in 2001 in Kent, they have travelled only through Southern England and Wales so far!



## "The Triangle"

Nature treasures to be found across the year on the triangle of green space at the junction of Perth Rd & Casterton Rd



Let's get creative! You don't have to be 'arty' to have some fun - try our simple nature activity prompts

# \*DIY\* WALKSHOP\*

A creative nature treasure hunt through the seasons

by botanist Sarah Lambert & artist Kathryn Parsons

## Nature has so many patterns and tiny details

Take a close look and then have a go at some of the following ideas:

### Treasure Hunt

Search at different times of the year and you'll find different things, so do this more than once and see what you can find!

- Collect fallen twigs, leaves, feathers & other treasures! How many different coloured leaves can you find? How many different shaped leaves can you find (eg pointy ones, heart-shaped, lobed, round & etc)
- Make a pattern with your finds - either at home, or on a safe place away from the road & pavement
- Take your leaves home to make leaf prints (paint on a leaf & print with it), or collages of imaginary leaf creatures
- String your treasures together to make a garland

### Wander with a camera

Go for a walk and photograph the plants that catch your eye.

If you've got a magnifier or zoom on your camera, try zooming in to see details that are hard to see... you could nature-doodle the patterns you find.

### Befriend a tree

By visiting often, notice how a tree changes through the seasons

- Touch the bark, how does it feel? knobbly, smooth, bobbly, rough, flaky?
- Make bark and leaf rubbings using wax crayons
- Collect fallen leaves or seeds, and press them in a book to make a lasting memento of your tree-friend. After a few weeks, when the leaves / seeds are dry you can make a collage by sticking them on paper

### Hunt For Wildflowers

Notice the wildflowers that are thriving here. Even in January you might find some flowering! How many different flowers can you find? How many colours? Enjoy nature-doodling their different shapes!

### Mini-worlds

Look closely for tiny details...

- Find the tiny lichen on tree-bark, walls, fence posts and pavements
- Find the tiniest flower, or leaf you can
- Notice the small patterns of the tree bark... and see how different each tree is!

Nature-doodle some of your mini-world finds, or photograph them

### Fungi Foray

In the autumn after the rain go fungi-hunting, look on the ground and also in the trees. Don't pick or eat - just enjoy the hunt.

The best time to look for fungi is usually a few weeks after it has rained. You could photograph them & share with us @ArtPopUpUK

### Nature's Songs

On a breezy day stand under a tree and listen to the sound of the wind in the leaves.

Different trees sound different! What sounds or words does it make you think of? Listen for birds singing in the hedge & the trees too

### Blossom Time

In July stand under the Lime trees, smell the blossom and listen for the insects' happy hum!



### WALKshops

In autumn 2022, Art Pop-Up commissioned botanist Sarah Lambert and artist Kathryn Parsons to host guided nature walks incorporating an art workshop: WALKshops. Engaging with nature and creativity has huge benefits for wellbeing.

These DIY guides to the walks are the project legacy, introducing local communities to the amazing nature on their doorsteps in 3 urban locations in Stamford: Casterton Road, Masterton Road and the Community Orchard at Christ Church Close. The free guides are available on our website.

Find us at [www.artpopup.co.uk](http://www.artpopup.co.uk)  
@ArtPopUpUK

©Art Pop-Up 2022. All rights reserved.

## Art Pop-Up



Hunting for treasures is great fun, but ensure you keep safe:

- Don't eat anything you find
- Wash your hands well with soap after you've handled any natural objects
- Watch out for dog poo & avoid it!
- Always watch out for traffic and cyclists on the pavement

## What is nature doodling?

Doodling is simple mark making

- Start by noticing the shapes and patterns that catch your eye. Look at leaf shapes, flowers & seeds, bark patterns, lichen etc
- Using whatever you have to hand (pencils, crayons, pens etc.), doodle the basic outlines of these treasures - keep them really simple. You could even use coffee and a stick to doodle.

Try folding a piece of paper in to 4 or more squares, then unfold it and fill each square with a pattern of doodles inspired by your finds. You could put one pattern in one square, repeating it lots of times, or fill each square with different doodles.

### About Art Pop-Up

We're a multi-award winning, non-profit community arts organisation based in Stamford. As cultural engineers & community builders, we create inspiring, thought-provoking opportunities for our community to get creative, from workshops to festivals and community events.

To find out what programmes we're running currently, check our Facebook page @ArtPopUpUK or website [ArtPopUp.co.uk](http://ArtPopUp.co.uk)

Photos & map by S Lambert, doodles & activities by K Parsons, design by S Roddan.



Supported using public funding by  
**ARTS COUNCIL ENGLAND**